

MONTHLY REPORT

March 2024

SHIRLEY CHISHOLM RECREATION CENTER



PROJECT OVERVIEW

On behalf of the NYC Department of Design and Construction (DDC) and NYC Department of Parks & Recreation (DPR), Lendlease is leading the design-build effort for the construction of the Shirley Chisholm Recreation Center in East Flatbush, Brooklyn. The approximately 65,000-square-foot, cutting-edge facility will offer a host of options and amenities to encourage learning, recreation, and fitness. The facility will include multipurpose rooms; a gymnasium and walking track; an indoor pool; and a teaching kitchen. The Center will also have a green roof and be LEED Gold certified.

Community Advisory

»»» Parking & Sidewalk Access Restriction

From Friday, April 12, 2024, to early June 2024, there will be no parking on Farragut Place between E 32nd and E 31st streets due to the installation of ConEd equipment.



»»» Basketball Courts Reopened

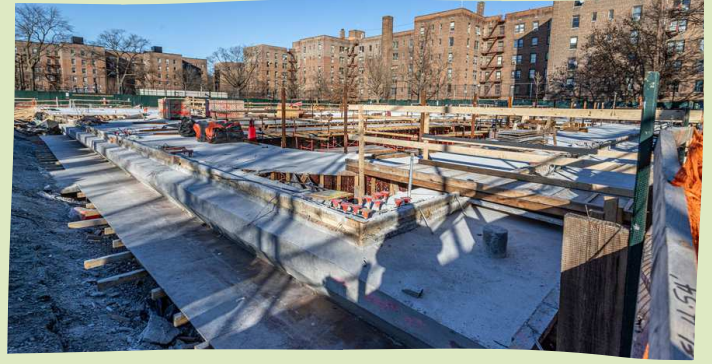
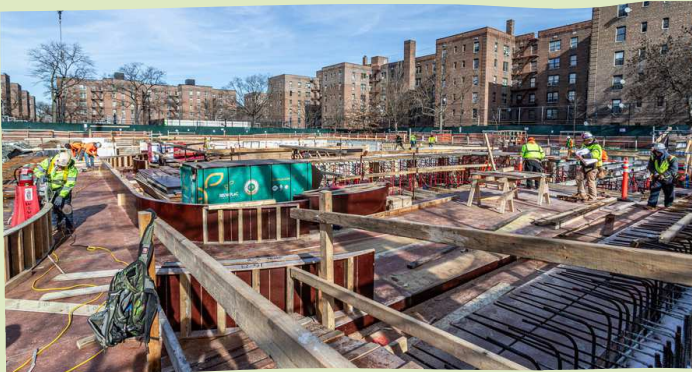
The basketball courts reopened with temporary striping on Thursday, April 4, 2024. Final painting and striping are scheduled for early May 2024.



Happening On Site



While steel columns and steel and timber beams are being manufactured off-site, construction on-site continues. Concrete placement for the first floor began in early February. Work began on the trench for the stormwater and sewer piping connection from the building site to Foster Avenue. Additionally, the project has made steady progress with the delivery of a crane that will install structural steel members, concrete, and exterior wall panels. This period has been defined by coordinated efforts to maintain safety standards, comply with environmental requirements, and keep the project on track for completion.



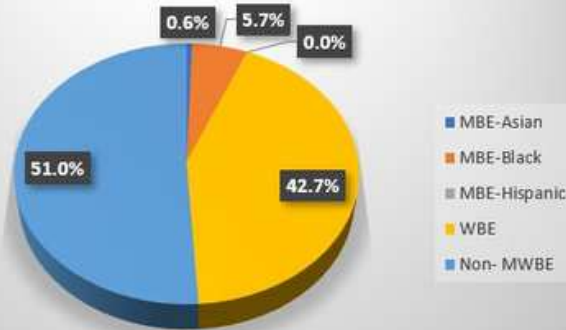
Design Phase

Minority/Women-Owned Business Enterprises (MWBEs) were actively engaged in the design phase. These MWBEs collectively constitute an impressive 49%, surpassing the designated 30% MWBE target of the overall design budget.

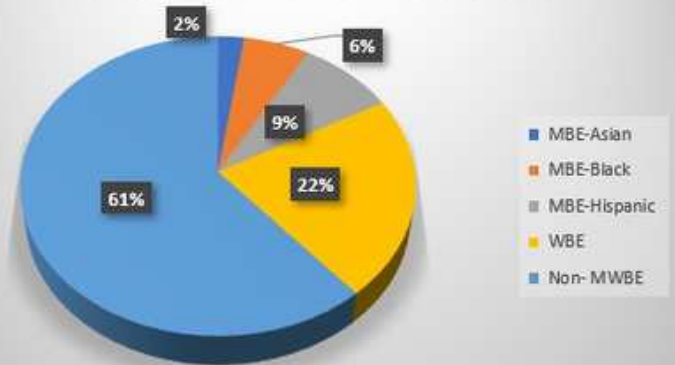
Construction Phase

As of March 31st, additional awards have been made to MWBEs, raising the overall project MWBE Construction participation rate to 21% in pursuit of the 30% MWBE goal. Of the current subcontracted construction dollars, MWBE firms make up 39%. We are on target to reach the 30% MWBE Project goal.

Design MWBE Breakdown



Construction MWBE Breakdown



Yet to be Awarded

Site Work- Misc Metals	Landscaping	Window Treatments	Ornamental Metals
Hardscape	Gym & Dance Studio Wood Flooring	Painting	Signage
Millwork	Masonry & Stucco	Glazing	Operable Partitions
Metal Panels			

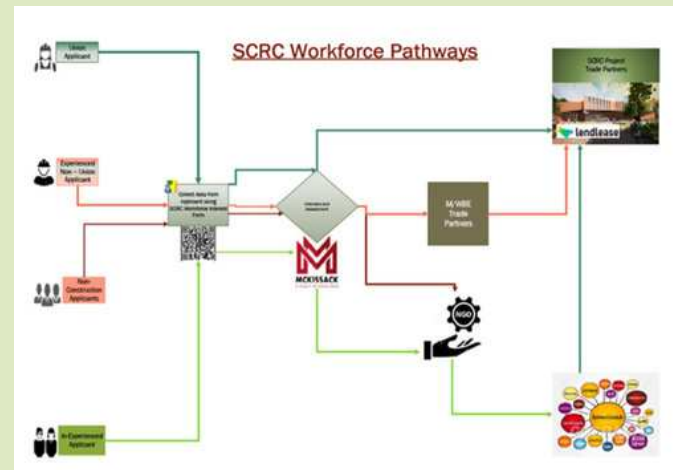
Interested in Bidding?

Shirley Chisholm Recreation Center - Potential Bidders Questionnaire



WORKFORCE OUTREACH

The Project team will incorporate our Community Employment Program (CEP) to engage with local and citywide workforce organizations, trade unions, training, and vocational partners to ensure that opportunities generated by this project are available to the local and diverse community within and beyond the construction sector. CEP identifies local talent, advocates for local members of trade unions to participate, and connects local job seekers with employment and workforce resources that best fit individual needs and qualifications. CEP will refer community job seekers to both training and supportive services, including short-term, pre-vocational training, GED instruction, pre-vocational work, and job readiness skills, in addition to construction industry-specific training such as Occupational Safety and Health Association (OSHA) 10 or 30-hour certification-additional strategies to improve minority, female, and local workforce participation.



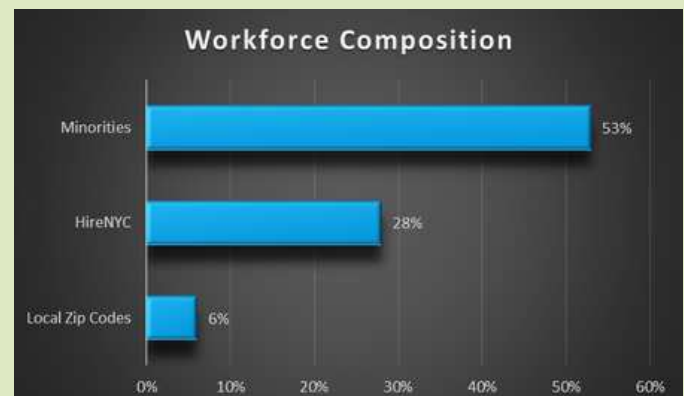
Workforce Candidates

Potential Workforce Candidates	Online Candidates as of 3/31/2024	Candidates who used the QR Code	Candidates Recommended to Apprenticeship Training
Union	11	11	N/A
Non-Union Experienced	19	19	18
Non-Construction	13	13	13
Total Applicants	43	43	31

Currently, 43 potential candidates have applied through the project Workforce QR Code for various construction positions. The Non-Union Experienced, Inexperienced, and Non-Construction candidates were referred to P2A, Workforce 1, Non-Traditional Employment for Women (NEW), and Construction Skills Inc. for the opportunity to participate in that program. Union candidates will be referred to the applicable contractors as they are onboarded. The current Union candidates are as follows: 4 Carpenters, two concrete and cement, one steel, one iron worker, and 3 laborers.

Current Workforce To Date

Since the project's inception, there have been 25,643 man-hours (trade work hours). Of the 25,643 hours, the HireNYC participation is 7,215 hours. HireNYC hours account for 28% of the total worker hours. HireNYC man hours are comprised of workers living in zip codes spanning the five boroughs of New York City. Minorities provided 13,770.50 hours, or 53% of the total man-hours. We expect these numbers to increase as the project brings on more workforce. Workers from the local zip codes worked 1,634.50 hours, making up 6% of the overall man-hours. The local required project zip codes are 11203, 11210, 11212, 11213, 11218, 11226, 11230, 11234, and 11236.





BLACK HISTORY MONTH BUSINESS SUPPORT RESOURCE FAIR

>>> February 17th, 2024

Church Flatbush Community Alliance hosted the 2nd annual Black History Month Celebration Business Support Resource Fair in February at Kings Theatre. McKissack attended on behalf of the Shirley Chisholm Recreation Center to provide information on job opportunities on the project and share project details with the local community.



FROM ADVOCACY TO ACCESS: 2024 NEW YORK STATE LEGISLATIVE AND BUSINESS CONFERENCE

>>> February 16th, 2024

The 2024 New York State Legislative and Business Conference was filled with informative panel discussions and networking opportunities, bringing together public and private sector agencies, community partners, and legislators. This event provided an enlightening venue for collaboration and knowledge sharing with important industry players.



WORKFORCE EVENT

>>> June 2024

The Shirley Chisholm Recreation Center (SCRC) workforce event is a key component of the SCRC Workforce Development Plan, which integrates community development with local economic growth in East Flatbush, Brooklyn. The event will focus on equitable job distribution for constructing the state-of-the-art, 62,000-square-foot SCRC facility. Through the Community Employment Program (CEP), the initiative seeks to tap local talent, facilitate participation in trade unions, and connect job seekers with relevant employment opportunities, including vocational training and industry-specific skills like OSHA certification.